



DVRTs

- >> Unequaled Image Quality
- >> Unlimited Storage
- >> Transmission Over Network & Internet

Cameras



- >> Wide Range of Cameras
- >> Exceptional Image Quality



**1321 Second Street
Cheney, WA 99004**
(888) 421-0050
Phone: (509) 235-5360
Fax: (509) 235-5363



Analog



Hybrid IP



HD-SDI
Super Hybrid

Digital Video Recorder Transmitters (DVRT's)



Analog and IP Mega-pixel Cameras



HD-SDI Mega-pixel Cameras

Table of Contents



Analog

Analog DVRT's

30 IPS Record and Display (Half D1) / 4 Video Channels.....	6
60 IPS Record and Display (Half D1) / 8 Video Channels.....	6
120 IPS Record and Display / 16 Video Channels	7
120 IPS Record and 480 IPS Real-Time Display / 16 Video Channels.....	7
240 IPS Record and Display / 16 Video Channels	7
240 IPS Record and 480 IPS Real-Time Display / 16 Video Channels.....	8
480 IPS Record and 480 IPS Real-Time Display / 16 Video Channels.....	8
240 IPS Record and Display / 32 Video Channels	8
480 IPS Record and 960 IPS Real-Time Display / 32 Video Channels.....	8



Hybrid IP

Hybrid IP DVRT's

120 IPS Record and 480 IPS Real-Time Display / 16 Analog Channels + IP	9
240 IPS Record and 480 IPS Real-Time Display / 16 Analog Channels + IP	9
480 IPS Record and 480 IPS Real-Time Display / 16 Analog Channels + IP	10
480 IPS Record and 960 IPS Real-Time Display / 32 Analog Channels + IP	10



HD-SDI

HD-SDI DVRT's

120 IPS Record and 120 IPS Real-Time Display / 4 HD-SDI Channels.....	11
---	----

Table of Contents (cont.)



Super Hybrid

Super Hybrid DVRT's

120 IPS Record and 480 IPS Real-Time Display / 16 Analog Channels + 4 HD-SDI Channels + IP	12
240 IPS Record and 480 IPS Real-Time Display / 16 Analog Channels + 4 HD-SDI Channels + IP	12
480 IPS Record and 480 IPS Real-Time Display / 16 Analog Channels + 4 HD-SDI Channels + IP	13
480 IPS Record and 960 IPS Real-Time Display / 32 Analog Channels + 4 HD-SDI Channels + IP	13

PC DVRT Software and Optional Accessories

PC DVRT Software	14
Optional Accessories (RS-422/RS-485 Interface (PTZ), Alarm Inputs / Relay Outputs, Audio Inputs)	14
Solid State Operating System Drives and RAID 5 Storage	14



Analog Cameras

Color Camera

Lens Not Included	15
-------------------------	----

Wide Angle Color Camera / Audio w/ Smart IR

Fixed Lens	15
------------------	----

Dome Cameras

Fixed Lens	15
------------------	----

Varifocal Lens	15
----------------------	----

Dome Cameras w/Smart IR

Fixed Lens	15
------------------	----

Varifocal Lens	16
----------------------	----

Vandal Dome Cameras

Fixed Lens	16
------------------	----

Varifocal Lens	16
----------------------	----

Vandal Dome Cameras w/Smart IR

Fixed Lens	16
------------------	----

Varifocal Lens	17
----------------------	----

Weatherproof Bullet Cameras w/IR

Fixed Lens	17
------------------	----

Varifocal Lens	17
----------------------	----

Long Varifocal Lens	18
---------------------------	----

Auto Focus Zoom Camera

27X Optical Auto Focus Zoom Lens	18
--	----

Table of Contents (cont.)



Analog Cameras (cont.)

Indoor High Speed Pan/Tilt/Zoom Camera

27X Optical Auto Focus Zoom Lens 18

Outdoor High Speed Pan/Tilt/Zoom Cameras

27X Optical Auto Focus Zoom Lens 19

36X Optical Auto Focus Zoom Lens 20



1.3 Mega-pixel IP Cameras

Color 1.3 Mega-pixel Camera

Lens Not Included 21

Color Dome 1.3 Mega-pixel Camera **w/IR**

Varifocal Lens 21

Vandal Dome 1.3 Mega-pixel Camera **w/IR**

Varifocal Lens 21

2.0 Mega-pixel IP Cameras

Color 2.0 Mega-pixel Camera

Lens Not Included 22

Color Dome 2.0 Mega-pixel Camera **w/IR**

Varifocal Lens 22

Vandal Dome 2.0 Mega-pixel Camera **w/IR**

Varifocal Lens 22

IP Video Server - D1 (VGA)

IP Video Server

30 IPS @ D1 / SD Card and Local Memory / PoE 23



HD-SDI Mega-pixel Cameras

HD-SDI 1.3 Mega-pixel Color Camera

Lens Not Included 24

HD-SDI 2.1 Mega-pixel Color Camera

Lens Not Included 25

HD-SDI 2.1 Mega-pixel Color Camera **w/IR**

2.8 ~ 10mm Mega-pixel Varifocal Lens 26

HD-SDI 2.1 Mega-pixel Vandal Dome Camera **w/IR**

2.8 ~ 10mm Mega-pixel Varifocal Lens 27

HD-SDI 2.1 Mega-pixel Weatherproof Bullet Camera **w/IR**

2.8 ~ 10mm Mega-pixel Varifocal Lens 28

Table of Contents (cont.)



Camera Enclosures and Mounts

Indoor Mount and Wall Mount Plate	29
Enclosure and Mount w/ Heater and Blower	29
Indoor Dome and Vandal Dome Mounts.....	29
Indoor PTZ Mounts	29
Indoor/Outdoor PTZ Mounts	29



Camera Lenses

Varifocal Manual Iris	30
Varifocal Auto Iris.....	30
IR Corrective Varifocal Auto Iris	30
Megapixel Auto Iris.....	30



CCTV Power Supplies

12 Volt DC Indoor	31
24 Volt AC Indoor	31
24 Volt AC Indoor (High Power)	31
Rack Mount Indoor	31
Dual Voltage Indoor (24 VAC / 12VDC).....	31
24 Volt AC Outdoor (NEMA-4X)	31

Analog DVRT's



Analog DVRT

30 IPS Record and Display (Half D1)

4 Video Channels w/ DVD-RW

1 Audio Channel (Included)

4 Alarm Inputs and 4 Relay Outputs (Optional)

- Player / Client / Multi-Client / WEB / POS Watermark / Windows Mobile, Android & PDA
- Dynamic IP Compatible (DDNS)
- High Speed / Object / Event / POS Search
- Automatic Internet Updates (Smart Updater)



- Two-Way Audio
- RAID Storage System (Optional)
- Four Year Warranty
- Tower Case or Rack Mount



S304T



S304R

Analog DVRT

60 IPS Record and Display (Half D1)

8 Video Channels w/ DVD-RW

2 Audio Channels (Included)

4 Alarm Inputs and 4 Relay Outputs (Optional)

- Player / Client / Multi-Client / WEB / POS Watermark / Windows Mobile, Android & PDA
- Dynamic IP Compatible (DDNS)
- High Speed / Object / Event / POS Search
- Automatic Internet Updates (Smart Updater)



- Two-Way Audio
- RAID Storage System (Optional)
- Four Year Warranty
- Tower Case or Rack Mount



S608T



S608R

Analog DVRT's



Analog DVRT

120 IPS Record and Display
16 Video Channels w/ DVD-RW
4 Audio Channels (Optional)
4 Alarm Inputs and 4 Relay Outputs (Optional)



- Player / Client / Multi-Client / WEB / POS Watermark / Windows Mobile, Android & PDA
- Dynamic IP Compatible (DDNS)
- High Speed / Object / Event / POS Search
- Automatic Internet Updates (Smart Updater)
- Two-Way Audio
- RAID Storage System (Optional)
- Four Year Warranty
- Tower Case or Rack Mount



S12016T



S12016R

Analog DVRT

120 IPS Record and 480 IPS Real-Time Display
16 Video Channels w/ DVD-RW
16 Audio Channels (Included)
4 Alarm Inputs and 4 Relay Outputs (Optional)



- Player / Client / Multi-Client / WEB / POS Watermark / Windows Mobile, Android & PDA
- Dynamic IP Compatible (DDNS)
- High Speed / Object / Event / POS Search
- Automatic Internet Updates (Smart Updater)
- Two-Way Audio
- RAID Storage System (Optional)
- Four Year Warranty
- Tower Case or Rack Mount



S12048016T



S12048016R

Analog DVRT

240 IPS Record and Display
16 Video Channels w/ DVD-RW
8 Audio Channels (Optional)
4 Alarm Inputs and 4 Relay Outputs (Optional)



- Player / Client / Multi-Client / WEB / POS Watermark / Windows Mobile, Android & PDA
- Dynamic IP Compatible (DDNS)
- High Speed / Object / Event / POS Search
- Automatic Internet Updates (Smart Updater)
- Two-Way Audio
- RAID Storage System (Optional)
- Four Year Warranty
- Tower Case or Rack Mount



S24016T



S24016R

Analog DVRT's

Analog DVRT

240 IPS Record and 480 IPS Real-Time Display
16 Video Channels w/ DVD-RW
16 Audio Channels (Included)
4 Alarm Inputs and 4 Relay Outputs (Optional)



S24048016T



S24048016R

- Player / Client / Multi-Client / WEB / POS Watermark / Windows Mobile, Android & PDA
- Dynamic IP Compatible (DDNS)
- High Speed / Object / Event / POS Search
- Automatic Internet Updates (Smart Updater)
- Two-Way Audio
- RAID Storage System (Optional)
- Four Year Warranty
- Tower Case or Rack Mount

Analog DVRT

480 IPS Record and 480 IPS Real-Time Display
16 Video Channels w/ DVD-RW
16 Audio Channels (Included)
4 Alarm Inputs and 4 Relay Outputs (Optional)



S48016T



S48016R

- Player / Client / Multi-Client / WEB / POS Watermark / Windows Mobile, Android & PDA
- Dynamic IP Compatible (DDNS)
- High Speed / Object / Event / POS Search
- Automatic Internet Updates (Smart Updater)
- Two-Way Audio
- RAID Storage System (Optional)
- Four Year Warranty
- Tower Case or Rack Mount

Analog DVRT

240 IPS Record and Display
32 Video Channels w/ DVD-RW
8 Audio Channels (Optional)
4 Alarm Inputs and 4 Relay Outputs (Optional)



S24032T



S24032R

- Player / Client / Multi-Client / WEB / POS Watermark / Windows Mobile, Android & PDA
- Dynamic IP Compatible (DDNS)
- High Speed / Object / Event / POS Search
- Automatic Internet Updates (Smart Updater)
- Two-Way Audio
- RAID Storage System (Optional)
- Four Year Warranty
- Tower Case or Rack Mount

Analog DVRT

480 IPS Record & 960 IPS Real-Time Display
32 Video Channels w/ DVD-RW
16 Audio Channels (Included)
4 Alarm Inputs and 4 Relay Outputs (Optional)



S48096032T



S48096032R

- Player / Client / Multi-Client / WEB / POS Watermark / Windows Mobile, Android & PDA
- Dynamic IP Compatible (DDNS)
- High Speed / Object / Event / POS Search
- Automatic Internet Updates (Smart Updater)
- Two-Way Audio
- RAID Storage System (Optional)
- Four Year Warranty
- Tower Case or Rack Mount

Hybrid IP DVRT's



Analog Capture Card
+
IP Camera Software

Cascadia™

Creating Remote Possibilities®



Hybrid IP = Analog + IP

Hybrid IP DVRT

120 IPS Record and 480 IPS Real-Time Display
16 Analog Channels w/ DVD-RW
Plus IP Channels
16 Audio Channels (Included)
4 Alarm Inputs and 4 Relay Outputs (Optional)

- Player / Client / Multi-Client / WEB / POS
Watermark / Windows Mobile, Android & PDA
Cascadia IP Licenses
- Dynamic IP Compatible (DDNS)
- High Speed / Object / Event / POS Search
- Automatic Internet Updates (Smart Updater)



- Two-Way Audio
- RAID Storage System (Optional)
- Four Year Warranty
- Tower Case or Rack Mount



SH12048016T



SH12048016R

Hybrid IP DVRT

240 IPS Record and 480 IPS Real-Time Display
16 Analog Channels w/ DVD-RW
Plus IP Channels
16 Audio Channels (Included)
4 Alarm Inputs and 4 Relay Outputs (Optional)

- Player / Client / Multi-Client / WEB / POS
Watermark / Windows Mobile, Android & PDA
Cascadia IP Licenses
- Dynamic IP Compatible (DDNS)
- High Speed / Object / Event / POS Search
- Automatic Internet Updates (Smart Updater)



- Two-Way Audio
- RAID Storage System (Optional)
- Four Year Warranty
- Tower Case or Rack Mount



SH24048016T



SH24048016R

Hybrid IP DVRT's



Analog Capture Card
+
IP Camera Software

Cascadia™

Creating Remote Possibilities®



Hybrid IP = Analog + IP

Hybrid IP DVRT

480 IPS Record and 480 IPS Real-Time Display
16 Analog Channels w/ DVD-RW
Plus IP Channels
16 Audio Channels (Included)
4 Alarm Inputs and 4 Relay Outputs (Optional)

- Player / Client / Multi-Client / WEB / POS
Watermark / Windows Mobile, Android & PDA
Cascadia IP Licenses
- Dynamic IP Compatible (DDNS)
- High Speed / Object / Event / POS Search
- Automatic Internet Updates (Smart Updater)



- Two-Way Audio
- RAID Storage System (Optional)
- Four Year Warranty
- Tower Case or Rack Mount



SH48016T



SH48016R

Hybrid IP DVRT

480 IPS Record and 960 IPS Real-Time Display
32 Analog Channels w/ DVD-RW
Plus IP Channels
16 Audio Channels (Included)
4 Alarm Inputs and 4 Relay Outputs (Optional)

- Player / Client / Multi-Client / WEB / POS
Watermark / Windows Mobile, Android & PDA
Cascadia IP Licenses
- Dynamic IP Compatible (DDNS)
- High Speed / Object / Event / POS Search
- Automatic Internet Updates (Smart Updater)



- Two-Way Audio
- RAID Storage System (Optional)
- Four Year Warranty
- Tower Case or Rack Mount



SH48096032T



SH24048032R

HD-SDI DVRT'S

Cascadia™

Creating Remote Possibilities®



4 HD-SDI Channels
(over Coaxial Cable)



HD-SDI Capture Card



HD-SDI = 4 HD-SDI Channels

HD-SDI DVRT

120 IPS Record and 120 IPS Real-Time Display
4 HD-SDI Channels w/ DVD-RW
1 Audio Channel (Included)
4 Alarm Inputs and 4 Relay Outputs (Included)

- Player / Client / Multi-Client / WEB / POS
Watermark / Windows Mobile, Android & PDA
- Dynamic IP Compatible (DDNS)
- High Speed / Object / Event / POS Search
- Automatic Internet Updates (Smart Updater)

- Two-Way Audio
- RAID Storage System (Optional)
- Four Year Warranty
- Tower Case or Rack Mount
- 1080p Monitor Required



SHD4T

HD-SDI DVRT

120 IPS Record and 120 IPS Real-Time Display
4 HD-SDI Channels w/ DVD-RW
1 Audio Channel (Included)
4 Alarm Inputs and 4 Relay Outputs (Included)

- Player / Client / Multi-Client / WEB / POS
Watermark / Windows Mobile, Android & PDA
- Dynamic IP Compatible (DDNS)
- High Speed / Object / Event / POS Search
- Automatic Internet Updates (Smart Updater)

- Two-Way Audio
- RAID Storage System (Optional)
- Four Year Warranty
- Tower Case or Rack Mount
- 1080p Monitor Required



SHD4R

Super Hybrid DVRT's

16 or 32
Analog Channels
(over Coaxial Cable)



4 HD-SDI Channels
(over Coaxial Cable)



Network IP Channels
(over the LAN or WAN)



Super Hybrid
Analog Capture Card
+
HD-SDI Capture Card
+
IP Camera Software

Cascadia™

Creating Remote Possibilities®



Super Hybrid = Analog + HD-SDI + IP

Super Hybrid DVRT

120 IPS Record and 480 IPS Real-Time Display

16 Analog Channels w/ DVD-RW

4 HD-SDI Channels + IP

16 Audio Channels (Included)

4 Alarm Inputs and 4 Relay Outputs (Optional)

- Player / Client / Multi-Client / WEB / POS Watermark / Windows Mobile, Android & PDA Cascadia IP Licenses
- Dynamic IP Compatible (DDNS)
- High Speed / Object / Event / POS Search
- Automatic Internet Updates (Smart Updater)



- Two-Way Audio
- RAID Storage System (Optional)
- Four Year Warranty
- Tower Case or Rack Mount
- 1080p Monitor Required as Secondary Monitor



SHD120480164T



SHD120480164R

Super Hybrid DVRT

240 IPS Record and 480 IPS Real-Time Display

16 Analog Channels w/ DVD-RW

4 HD-SDI Channels + IP

16 Audio Channels (Included)

4 Alarm Inputs and 4 Relay Outputs (Optional)

- Player / Client / Multi-Client / WEB / POS Watermark / Windows Mobile, Android & PDA Cascadia IP Licenses
- Dynamic IP Compatible (DDNS)
- High Speed / Object / Event / POS Search
- Automatic Internet Updates (Smart Updater)



- Two-Way Audio
- RAID Storage System (Optional)
- Four Year Warranty
- Tower Case or Rack Mount
- 1080p Monitor Required for Secondary Monitor



SHD240480164T



SHD240480164R

Super Hybrid DVRT's

16 or 32
Analog Channels
(over Coaxial Cable)



4 HD-SDI Channels
(over Coaxial Cable)



Network IP Channels
(over the LAN or WAN)



Super Hybrid
Analog Capture Card
+
HD-SDI Capture Card
+
IP Camera Software

Cascadia™

Creating Remote Possibilities®



Super Hybrid = Analog + HD-SDI + IP

Super Hybrid DVRT

480 IPS Record and 480 IPS Real-Time Display

16 Analog Channels w/ DVD-RW

4 HD-SDI Channels + IP

16 Audio Channels (Included)

4 Alarm Inputs and 4 Relay Outputs (Optional)

- Player / Client / Multi-Client / WEB / POS Watermark / Windows Mobile, Android & PDA Cascadia IP Licenses
- Dynamic IP Compatible (DDNS)
- High Speed / Object / Event / POS Search
- Automatic Internet Updates (Smart Updater)



- Two-Way Audio
- RAID Storage System (Optional)
- Four Year Warranty
- Tower Case or Rack Mount
- 1080p Monitor Required as Secondary Monitor



SHD480164T



SHD480164R

Super Hybrid DVRT

480 IPS Record and 960 IPS Real-Time Display

32 Analog Channels w/ DVD-RW

4 HD-SDI Channels + IP

16 Audio Channels (Included)

4 Alarm Inputs and 4 Relay Outputs (Optional)

- Player / Client / Multi-Client / WEB / POS Watermark / Windows Mobile, Android & PDA Cascadia IP Licenses
- Dynamic IP Compatible (DDNS)
- High Speed / Object / Event / POS Search
- Automatic Internet Updates (Smart Updater)



- Two-Way Audio
- RAID Storage System (Optional)
- Four Year Warranty
- Tower Case or Rack Mount
- 1080p Monitor Required for Secondary Monitor



SHD480960324T



SHD480960324R

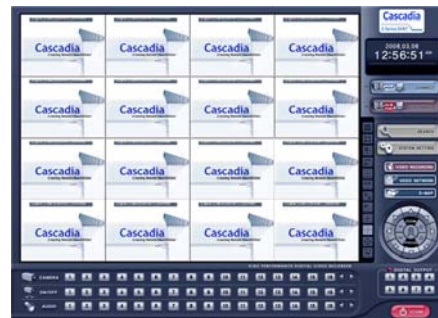
PC DVRT Software and Accessories



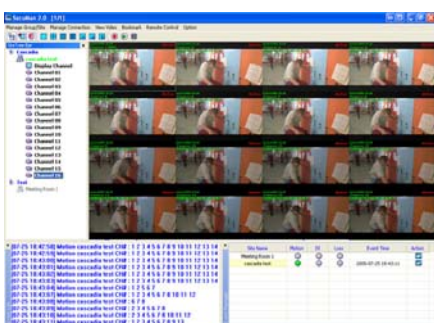
Server Software



Player Software



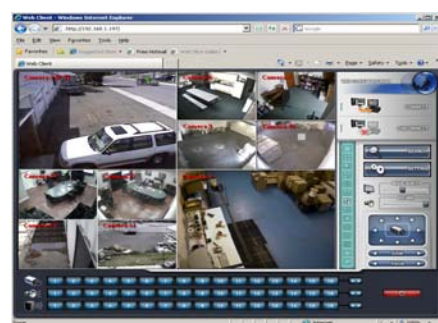
Client Software



Multi-Client Software



Windows Mobile, Android & PDA Software



Web Client Software

Optional Accessories



RS1

RS-422/RS-485 Interface (PTZ)



IO44

4 Alarm Inputs and 4 Relay Outputs
w/ RS-422/RS-485 Interface (PTZ)



4AUDIO
8AUDIO

4 Audio Inputs or
8 Audio Inputs

Note: Either a RS1 or IO44 is Required for PTZ Control

Solid State Operating System Drives and RAID 5 Storage

- Solid State Operating System Hard Drives
- SATA
- Three Year Warranty



- Internal and External RAID 5 Storage
- SATA
- Four Year Warranty
- Unlimited Combinations



Analog Cameras

Color Camera / 600 TVL (Color) / 650 TVL (B&W) True Day & Night (ICR) / SDNR / Dual Voltage

- 1/3" SONY Super HAD CCD II
- 600 TV Lines (Color) / 650 TV Lines (B&W)
- 0.05 Lux (Color) / 0.005 Lux (B&W)
- OSD / True Day & Night (ICR) Cut Filter / SDNR
- Electronic Shutter Speed: 1/60 ~ 1/120,000
- S/N Ratio: More than 50dB
- AGC / Flickerless: On/Off
- Super BLC / SDNR: Off/Low/Medium/High
- White Balance: ATW/Manual/Push
- Mirror / Privacy Mask - 4 Zones
Motion Detection - 4 Zones
- Lens Type: Manual Iris / DC Auto Iris
- Lens Mount: CS
- 24 VAC / 12 VDC



BBM-24F
Lens Not Included

Wide Angle Color Camera / 600 TVL (Color) / 650 TVL (B&W) 2.5mm Fixed Lens / Color by Day - B&W by Night (AGC Type) Audio / Mirror / w/ Smart IR (LED Distance 30 ft.) / 12 VDC

- 1/3" SONY Super HAD CCD II
- 600 TV Lines (Color) / 650 TV Lines (B&W)
- 2.5mm Fixed Lens
- 0.05 Lux (Color) / 0.00 Lux (B&W IR LED's On)
- Color by Day - B&W by Night (AGC Type)
- Electronic Shutter Speed: 1/60 ~ 1/120,000
- AGC / White Balance: Auto
- 12 Smart IR LED's and 1 CDS Sensor
Smart IR LED Distance: 30 ft.
- Audio Included / 2-Axis Mechanism
- 12 VDC



LML-20S
2.5mm Fixed Lens Included
Audio Included

Dome Camera / 600 TVL (Color) / 650 TVL (B&W) 3.8mm Fixed Lens / Color by Day - B&W by Night (AGC Type) SDNR / 12 VDC / 3-Axis

- 1/3" SONY Super HAD CCD II
- 600 TV Lines (Color) / 650 TV Lines (B&W)
- 3.8mm Fixed Lens
- 0.05 Lux (Color) / 0.03 Lux (B&W)
- Color by Day - B&W by Night (AGC Type) / SDNR
- Electronic Shutter Speed: 1/60 ~ 1/120,000
- AGC / BLC: Auto
- White Balance / SDNR: Auto
- 3-Axis Mechanism
- 12 VDC



DFL-20S
3.8mm Fixed Lens Included

Dome Camera / 600 TVL (Color) / 650 TVL (B&W) 2.8 ~ 10.5mm Varifocal Lens / True Day & Night (ICR) / SDNR Dual Voltage / 3-Axis / Service Video Out

- 1/3" SONY Super HAD CCD II
- 600 TV Lines (Color) / 650 TV Lines (B&W)
- Auto Iris 2.8 ~ 10.5mm Varifocal Lens
- 0.05 Lux (Color) / 0.005 Lux (B&W)
- OSD / True Day & Night (ICR) Cut Filter / SDNR
- Electronic Shutter Speed: 1/60 ~ 1/120,000
- AGC / Flickerless: On/Off
- Super BLC / SDNR: Off/Low/Middle/High
- White Balance: ATW/Manual/Push
- Mirror / Privacy Mask - 4 Zones
Motion Detection - 4 Zones
- 3-Axis Mechanism / Service Video Out
- 24 VAC / 12 VDC



DBM-24VF
Auto Iris 2.8 ~ 10.5mm
Varifocal Lens Included

Dome Camera / 600 TVL (Color) / 650 TVL (B&W) 3.8mm Fixed Lens / Color by Day - B&W by Night (AGC Type) SDNR / w/ Smart IR (LED Distance 45 ft.) / 12 VDC / 3-Axis / Service Video Out

- 1/3" SONY Super HAD CCD II
- 600 TV Lines (Color) / 650 TV Lines (B&W)
- 3.8mm Fixed Lens
- 0.05 Lux (Color) / 0.00 Lux (B&W IR LED's On)
- OSD / Color by Day - B&W by Night (AGC Type) / SDNR
- Electronic Shutter Speed: 1/60 ~ 1/120,000
- AGC / Flickerless: On/Off
- Super BLC / SDNR: Off/Low/Middle/High
- White Balance: ATW/Manual/Push
- 28 Smart IR LED's and 1 CDS Sensor
Smart IR LED Distance: 45 ft.
- Mirror / Privacy Mask - 4 Zones
Motion Detection - 4 Zones
- 3-Axis Mechanism / Service Video Out
- 12 VDC



LBM-20S
3.8mm Fixed Lens Included

Analog Cameras

Dome Camera / 600 TVL (Color) / 650 TVL (B&W)

3.8 ~ 9.5mm Varifocal Lens / True Day & Night (ICR) / SDNR

w/ Smart IR (LED Distance 45 ft.) / Dual Voltage / 3-Axis / Service Video Out

- 1/3" SONY Super HAD CCD II
- 600 TV Lines (Color) / 650 TV Lines (B&W)
- Auto Iris 3.8 ~ 9.5mm Varifocal Lens
- 0.05 Lux (Color) / 0.005 Lux (B&W)
0.00 Lux (B&W IR LED's On)
- OSD / True Day & Night (ICR) Cut Filter / SDNR
- Electronic Shutter Speed: 1/60 ~ 1/120,000
- AGC / Flickerless: On/Off
- Super BLC / SDNR: Off/Low/Middle/High
- White Balance: ATW/Manual/Push
- 20 Smart IR LED's and 1 CDS Sensor
Smart IR LED Distance: 45 ft.
- Mirror / Privacy Mask - 4 Zones
Motion Detection - 4 Zones
- 3-Axis Mechanism / Service Video Out
- 24 VAC / 12 VDC



LBM-24VF

Auto Iris 3.8 ~ 9.5mm
Varifocal Lens Included

Vandal Dome Camera / 600 TVL (Color) / 650 TVL (B&W)

3.8mm Fixed Lens / Color by Day - B&W by Night (AGC Type)

SDNR / 12 VDC / 3-Axis / Service Video Out / IP 65

- 1/3" SONY Super HAD CCD II
- 600 TV Lines (Color) / 650 TV Lines (B&W)
- 3.8mm Fixed Lens
- 0.05 Lux (Color) / 0.01 Lux (B&W)
- Color by Day - B&W by Night (AGC Type) / SDNR
- Electronic Shutter Speed: 1/60 ~ 1/100,000
- AGC: Auto
- BLC: Auto
- White Balance / SDNR: Auto
- 3-Axis Mechanism / Service Video Out
- Weatherproof - IP 65
- 12 VDC



VFL-20S

3.8mm Fixed Lens Included

Vandal Dome Camera / 600 TVL (Color) / 650 TVL (B&W)

2.8 ~ 10.5mm Varifocal Lens / True Day & Night (ICR) / SDNR

Dual Voltage / 3-Axis / Service Video Out / IP 65

- 1/3" SONY Super HAD CCD II
- 600 TV Lines (Color) / 650 TV Lines (B&W)
- Auto Iris 2.8 ~ 10.5mm Varifocal Lens
- 0.05 Lux (Color) / 0.005 Lux (B&W)
- OSD / True Day & Night (ICR) Cut Filter / SDNR
- Electronic Shutter Speed: 1/60 ~ 1/120,000
- AGC / Flickerless: On/Off
- Super BLC / SDNR: Off/Low/Middle/High
- White Balance: ATW/Manual/Push
- Mirror / Privacy Mask - 4 Zones
Motion Detection - 4 Zones
- 3-Axis Mechanism / Service Video Out
- Weatherproof - IP 65
- 24 VAC / 12 VDC



VCM-24VF

Auto Iris 2.8 ~ 10.5mm
Varifocal Lens Included

Vandal Dome Camera / 600 TVL (Color) / 650 TVL (B&W)

3.8mm Fixed Lens / Color by Day - B&W by Night (AGC Type) / SDNR

w/ Smart IR (LED Distance 45 ft.) / 12 VDC / 3-Axis / Service Video Out / IP 65

- 1/3" SONY Super HAD CCD II
- 600 TV Lines (Color) / 650 TV Lines (B&W)
- 3.8mm Fixed Lens
- 0.05 Lux (Color) / 0.00 Lux (B&W IR LED's On)
- OSD / Color by Day - B&W by Night (AGC Type) / SDNR
- Electronic Shutter Speed: 1/60 ~ 1/120,000
- AGC / Flickerless: On/Off
- Super BLC / SDNR: Off/Low/Middle/High
- White Balance: ATW/Manual/Push
- 25 Smart IR LED's and 1 CDS Sensor
Smart IR LED Distance: 45 ft.
- Mirror / Privacy Mask - 4 Zones
Motion Detection - 4 Zones
- 3-Axis Mechanism / Service Video Out
- Weatherproof - IP 65
- 12 VDC



LDM-20S

3.8mm Fixed Lens Included

Analog Cameras

Vandal Dome Camera / 600 TVL (Color) / 650 TVL (B&W)

3.8 ~ 9.5mm Varifocal Lens / **True Day & Night (ICR)** / **SDNR**

w/ Smart IR (LED Distance 45 ft.) / Dual Voltage / 3-Axis / Service Video Out / IP 65

- 1/3" SONY Super HAD CCD II
- 600 TV Lines (Color) / 650 TV Lines (B&W)
- Auto Iris 3.8 ~ 9.5mm Varifocal Lens
- 0.05 Lux (Color) / 0.005 Lux (B&W)
0.00 Lux (B&W IR LED's On)
- OSD / True Day & Night (ICR) Cut Filter / SDNR
- Electronic Shutter Speed: 1/60 ~ 1/120,000
- AGC / Flickerless: On/Off
- Super BLC / SDNR: Off/Low/Middle/High
- White Balance: ATW/Manual/Push
- 20 Smart IR LED's and 1 CDS Sensor
Smart IR LED Distance: 45 ft.
- Mirror / Privacy Mask - 4 Zones
Motion Detection - 4 Zones
- 3-Axis Mechanism / Service Video Out
- Weatherproof - IP 65
- 24 VAC / 12 VDC



LDM-24VF

Auto Iris 3.8 ~ 9.5mm
Varifocal Lens Included

Weatherproof Bullet Camera / 600 TVL (Color) / 650 TVL (B&W)

3.8mm Fixed Lens / Color by Day - B&W by Night (AGC Type)

SDNR / **w/ Smart IR** (LED Distance 45 ft.) / 12 VDC / IP 66

- 1/3" SONY Super HAD CCD II
- 600 TV Lines (Color) / 650 TV Lines (B&W)
- 3.8mm Fixed Lens
- 0.1 Lux (Color) / 0.00 Lux (B&W IR LED's On)
- Color by Day - B&W by Night (AGC Type) / SDNR
- Electronic Shutter Speed: 1/60 ~ 1/120,000
- AGC: On/Off
- White Balance / SDNR: Auto
- 12 Smart IR LED's and 1 CDS Sensor
Smart IR LED Distance: 45 ft.
- Weatherproof - IP 66
- 12 VDC



WBL-20S

3.8mm Fixed Lens Included

Weatherproof Bullet Camera / 600 TVL (Color) / 650 TVL (B&W)

3.8 ~ 9.5mm Varifocal Lens / **True Day & Night (ICR)**

SDNR / **w/ Smart IR** (LED Distance 60 ft.) / 12 VDC / IP 66

- 1/3" SONY Super HAD CCD II
- 600 TV Lines (Color) / 650 TV Lines (B&W)
- Auto Iris 3.8 ~ 9.5mm Varifocal Lens
- 0.05 Lux (Color) / 0.005 Lux (B&W)
0.00 Lux (B&W IR LED's On)
- OSD / True Day & Night (ICR) Cut Filter / SDNR
- Electronic Shutter Speed: 1/60 ~ 1/120,000
- AGC / Flickerless: On/Off
- Super BLC / SNDR: Off/Low/Middle/High
- White Balance: ATW/Manual/Push
- 18 Smart IR LED's and 1 CDS Sensor
Smart IR LED Distance: 60 ft.
- Weatherproof - IP 66
- 12 VDC



WCM-20VF

Auto Iris 3.8 ~ 9.5mm
Varifocal Lens Included

Weatherproof Bullet Camera / 600 TVL (Color) / 650 TVL (B&W)

3.8 ~ 9.5mm Varifocal Lens / **True Day & Night (ICR)** / **SDNR**

w/ Smart IR (LED Distance 164 ft.) / Dual Voltage / Service Video Out / IP 66

External Varifocal Adjustment / Built-in Fan

- 1/3" SONY Super HAD CCD II
- 600 TV Lines (Color) / 650 TV Lines (B&W)
- Auto Iris 3.8 ~ 9.5mm Varifocal Lens
- 0.05 Lux (Color) / 0.005 Lux (B&W)
0.00 Lux (B&W IR LED's On)
- OSD / True Day & Night (ICR) Cut Filter / SDNR
- Electronic Shutter Speed: 1/60 ~ 1/120,000
- AGC / Flickerless: On/Off
- Super BLC / SNDR: Off/Low/Middle/High
- White Balance: ATW/Manual/Push
- 66 Smart IR LED's and 1 CDS Sensor
Smart IR LED Distance: 164 ft.
- Service Video Out
- Weatherproof - IP 66
- External Varifocal Adjustment / Built-in Fan
- 24 VAC / 12 VDC



WFM-24VF

Auto Iris 3.8 ~ 9.5mm
Varifocal Lens Included

Analog Cameras

Weatherproof Bullet Camera / 550 TVL

7.5 ~ 50mm Long Varifocal Lens / **True Day & Night (ICR2)**

SDNR / DSS / w/ Hybrid IR (LED Distance 180 ft.)

12 VDC / Service Video Out / IP 65 / Built-in Heater and Fan

- 1/3" SONY Super HAD CCD - 550 TV Lines
- Auto Iris 7.5 ~ 50mm Long Varifocal Lens / 2x Digital Zoom
- 0.3 Lux (Color) / 0.01 Lux (B&W) / 0.008 Lux (Color DSS x32) / 0.0008 Lux (B&W DSS x32) / 0.00 Lux (B&W IR LED's On)
- True Day & Night (ICR2) Cut Filter / SDNR / DSS
- Electronic Shutter Speed: 1/60 ~ 1/120,000
- AGC / BLC / Flickerless: On/Off
- White Balance / SDNR: Auto
- 9 Hybrid IR LED's and 1 CDS Sensor
IR LED Distance: 180 ft.
- Service Video Out
- Weatherproof - IP 65
- Built-in Heater and Fan
- 12 VDC



BE4810NCR

Auto Iris 7.5 ~ 50mm
Long Varifocal Lens Included

Auto Focus Camera / 580 TVL (Color) / 600 TVL (B&W)

27X Optical Auto Focus / 3.6 ~ 97.2mm Zoom Lens

True Day & Night (ICR) / 3D-SDNR / DSS / Dual Voltage / RS-485

- 1/4" SONY Super HAD CCD II
- 580 TV Lines (Color) / 600 TV Lines (B&W)
- 27X Optical Auto Focus Auto Iris 3.6 ~ 97.2mm Zoom Lens
- Digital Zoom: 10x/2x ~ 10x Variable (28x ~ 270x)
- 0.5 Lux (Color) / 0.1 Lux (B&W) / 0.001 Lux (Color DSS x128) / 0.0005 Lux (B&W DSS x128)
- OSD / True Day & Night (ICR) Cut Filter / 3D-SDNR / DSS
- Electronic Shutter Speed: 1/60 ~ 1/10,000
- AGC / Flickerless: On/Off
- Super BLC: 6 Backlight Compensation Zones
- 3D-SDNR: Low/Middle/High
- White Balance: Auto / Push (Fixed) Auto White Balance Outdoor / Indoor / Manual
- RS-485 / Pelco-D
- 24 VAC / 12 VDC



ZBN-24Z27F

27X Optical Auto Focus Auto Iris
3.6 ~ 97.2mm Zoom Lens Included

Indoor High Speed PTZ Camera

580 TVL (Color) / 600 TVL (B&W)

27X Optical Auto Focus / 3.6 ~ 97.2mm Zoom Lens

True Day & Night (ICR) / DSS / 24 VAC

w/ 128 Presets / RS-485

- 1/4" SONY Super HAD CCD II
- 580 TV Lines (Color) / 600 TV Lines (B&W)
- 27X Optical Auto Focus Auto Iris 3.6 ~ 97.2mm Zoom Lens
- Digital Zoom: 10x/2x ~ 10x Variable (28x ~ 270x)
- 0.5 Lux (Color) / 0.1 Lux (B&W) / 0.001 Lux (Color DSS x128) / 0.0005 Lux (B&W DSS x128)
- OSD / True Day & Night (ICR) Cut Filter / DSS
- Electronic Shutter Speed: 1/60 ~ 1/10,000
- S/N Ratio: More than 50dB (AGC Off)
- Super BLC / Flickerless: On/Off
- White Balance: Auto / Manual (Red, Blue Gain Adjustable)
- Privacy Mask: 8 Zones
- Auto Focus / Auto Home
- Camera Control: RS-485 / Pelco-D/P / Up to 255 Cameras Simultaneously
- Pan/Tilt Speed: 1° ~ 360°/sec (According to Zoom Ratio)
- Preset Speed: 360°/sec
- 360° Continuous Rotation / Flip Function to Follow Objects
- 128 Programmable Presets (16 Character Display)
- 8 Guard Tours (Preset / Pattern / Auto Scan / Tour Input)
- User Programmable Patterns: 4 Patterns / 5 Minute Memory per Pattern
- 4 Alarm Inputs - Normally Open Dry Contact (NO / NC) / 2 Relay Outputs
- Aluminum / Silver / 24 VAC



SBN-22Z27F

27X Optical Auto Focus
Auto Iris 3.6 ~ 97.2mm
Zoom Lens Included

(Optional Accessories)



SC3100

PTZ Keyboard Controller
(Optional)



SWB1000

Indoor PTZ Wall Mount
(Optional)



SPB1000

Indoor PTZ
Pendant Mount
(Optional)

SIB1000

Indoor PTZ
In-Ceiling Mount (Optional)

Analog Cameras

Outdoor High Speed PTZ Camera
580 TVL (Color) / 580 TVL (B&W)
27X Optical Auto Focus / 3.6 ~ 97.2mm Zoom Lens
True Day & Night (ICR) / DSS
24 VAC / Wall Mount or Pendant Mount / IP 66
w/ 128 Presets / RS-485

- 1/4" SONY Super HAD CCD II - 580 TV Lines (Color) / 580 TV Lines (B&W)
- 27X Optical Auto Focus Auto Iris 3.6 ~ 97.2mm Zoom Lens
- Digital Zoom: 10x/2x ~ 10x Variable (28x ~ 270x)
- High Durability / MTBF 2 Million Cycles
- 0.5 Lux (Color) / 0.1 Lux (B&W) / 0.0005 Lux (B&W DSS x128)
- OSD / True Day & Night (ICR) Cut Filter / DSS
- Electronic Shutter Speed: 1/60 ~ 1/10,000
- S/N Ratio: More than 50dB (AGC Off)
- BLC / Flickerless: On/Off
- White Balance: Auto / Manual (Red, Blue Gain Adjustable)
- Privacy Mask: 8 Zones
- Auto Focus / Auto Home
- Camera Control: RS-485 / Pelco-D/P / Up to 255 Cameras Simultaneously
- Pan/Tilt Speed: 1° ~ 360°/sec (According to Zoom Ratio)
- Preset Speed: 360°/sec
- 360° Continuous Rotation / Flip Function to Follow Objects
- 128 Programmable Presets (16 Character Display)
- 8 Guard Tours (Preset / Pattern / Auto Scan / Tour Input)
- User Programmable Patterns: 4 Patterns / 5 Minute Memory per Pattern
- 4 Alarm Inputs - Normally Open Dry Contact (NO / NC) / 2 Relay Outputs
- Aluminum / White / Weatherproof - IP 66 / 24 VAC



SDN-22Z27FW

27X Optical Auto Focus Auto Iris
 3.6 ~ 97.2mm Zoom Lens Included
 (Sunshield Included)



SDN-22Z27FP

27X Optical Auto Focus Auto Iris
 3.6 ~ 97.2mm Zoom Lens Included
 (Sunshield Included)

(Optional Accessories)



SC3100

PTZ Keyboard Controller
 (Optional)



SCB2000

Indoor/Outdoor
 PTZ Corner Mount
 (Optional)



SOB2000

Indoor/Outdoor
 PTZ Pole Mount
 (Optional)

Analog Cameras

Outdoor High Speed PTZ Camera / 530 TVL
36X Optical Auto Focus / 3.4 ~ 122.4mm Zoom Lens
True Day & Night (ICR) / DSS
24 VAC / Wall Mount or Pendant Mount / IP 66
w/ 128 Presets / RS-485

- 1/4" SONY Exview HAD CCD - 530 TV Lines
- 36X Optical Auto Focus Auto Iris 3.4 ~ 122.4mm Zoom Lens
- Digital Zoom: 12x/2x ~ 12x Variable (37x ~ 432x)
- High Durability / MTBF 2 Million Cycles
- 0.5 Lux (Color) / 0.3 Lux (B&W) / 0.005 Lux (Color DSS x128) / 0.0005 Lux (B&W DSS x128)
- OSD / True Day & Night (ICR) Cut Filter / DSS
- Electronic Shutter Speed: 1/4 ~ 1/10,000
- S/N Ratio: More than 50dB (AGC Off)
- BLC / Flickerless: On/Off
- White Balance: Auto / Manual (Red, Blue Gain Adjustable)
- Wide Dynamic Range: On/Off
- Privacy Mask: 8 Zones
- Auto Focus / Auto Home
- Camera Control: RS-485 / Pelco-D/P, Panasonic, Samsung Selectable Up to 255 Cameras Simultaneously
- Pan/Tilt Speed: 1° ~ 360°/sec (According to Zoom Ratio)
- Preset Speed: 360°/sec
- 360° Continuous Rotation / Flip Function to Follow Objects
- 128 Programmable Presets (16 Character Display)
- 8 Guard Tours (Preset / Pattern / Auto Scan / Tour Input)
- User Programmable Patterns: 4 Patterns / 5 Minute Memory per Pattern
- 4 Alarm Inputs - Normally Open Dry Contact (NO / NC) / 2 Relay Outputs
- Aluminum / White / Weatherproof - IP 66 / 24 VAC



SS2965NXW

36X Optical Auto Focus Auto Iris
 3.4 ~ 122.4mm Zoom Lens Included
 (Sunshield Included)



SS2965NXP

36X Optical Auto Focus Auto Iris
 3.4 ~ 122.4mm Zoom Lens Included
 (Sunshield Included)

(Optional Accessories)



SC3100

PTZ Keyboard Controller
 (Optional)



SCB2000

Indoor/Outdoor
 PTZ Corner Mount
 (Optional)



SOB2000

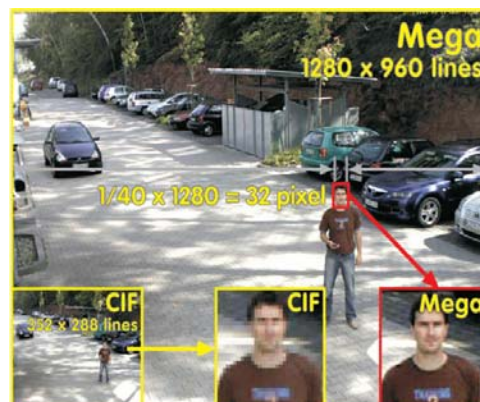
Indoor/Outdoor
 PTZ Pole Mount
 (Optional)

IP 1.3 Mega-pixel Cameras



Hybrid IP Technology

XNET can support Hybrid technology. At a standard analog CCTV BNC composite connection for CCTV system. At the same time, monitoring image over IP.



Color IP Camera / 1.3 Mega-pixel Color by Day - B&W by Night (AGC Type) / DSS 12 VDC / PoE

- 1/2" Progressive Scan CMOS Sensor
- 800 TV Lines 1280(H) x 960(V)
- 1 Lux (DSS On)
- OSD / SDNR / DSS
- Electronic Shutter Speed: 1/60 ~ 1/600 (13 Step)
- S/N Ratio: More than 50dB
- AGC: On/Off
- BLC / SDNR: On/Off
- White Balance: Auto/Manual
- Lens Type: Manual Iris / DC Auto Iris
- Lens Mount: CS
- 12 VDC / PoE



IGP1030
Lens Not Included

Dome IP Camera / 1.3 Mega-pixel 3.0 ~ 9mm Varifocal Lens / True Day & Night (ICR) / DSS w/ IR (LED Distance 45 ft.) / 12 VDC / PoE

- 1/2" Progressive Scan CMOS Sensor
- 800 TV Lines 1280(H) x 960(V)
- 1 Lux (DSS On)
- OSD / SDNR / DSS
- Electronic Shutter Speed: 1/60 ~ 1/600 (13 Step)
- S/N Ratio: More than 50dB
- AGC: On/Off
- BLC / SDNR: On/Off
- White Balance: Auto/Manual
- Lens Type: DC Auto Iris
- 3 Axis Mechanism / Service Video Out
- Lens Mount: S
- 12 VDC / PoE



IDP4030VR
Auto-Iris 3.0 ~ 9mm
Varifocal Lens Included

Vandal Dome IP Camera / 1.3 Mega-pixel 3.0 ~ 9mm Varifocal Lens / True Day & Night (ICR) / DSS w/ IR (LED Distance 45 ft.) / 12 VDC / PoE

- 1/2" Progressive Scan CMOS Sensor
- 800 TV Lines 1280(H) x 960(V)
- 1 Lux (DSS On)
- OSD / SDNR / DSS
- Electronic Shutter Speed: 1/60 ~ 1/600 (13 Step)
- S/N Ratio: More than 50dB
- AGC: On/Off
- BLC / SDNR: On/Off
- White Balance: Auto/Manual
- Lens Type: DC Auto Iris
- 3 Axis Mechanism / Service Video Out
- Lens Mount: S
- 12 VDC / PoE



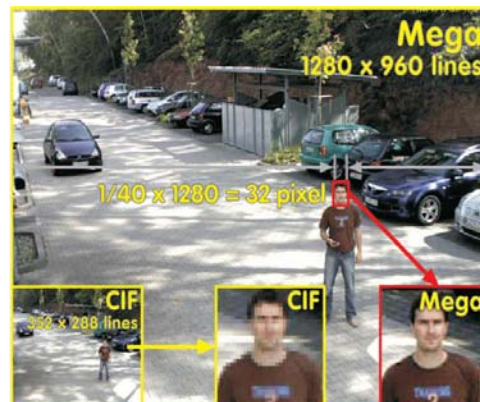
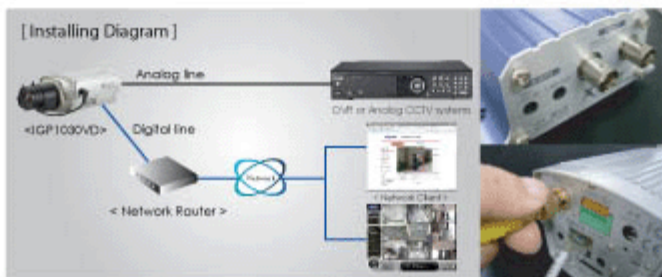
IVP4030VR
Auto-Iris 3.0 ~ 9mm
Varifocal Lens Included

IP 2.0 Mega-pixel Cameras



Hybrid IP Technology

XNET can support Hybrid technology. At a standard analog CCTV BNC composite connection for CCTV system. At the same time, monitoring image over IP.



Color IP Camera / 2.0 Mega-pixel True Day & Night (ICR) / DSS 12 VDC / PoE

- 1/3" Progressive Scan CMOS Sensor
- 1100 TV Lines - 1920(H) x 1080(V)
- 1 Lux (DSS On)
- OSD / SDNR / DSS
- Electronic Shutter Speed: 1/60 ~ 1/600 (13 Step)
- S/N Ratio: More than 50dB
- AGC: On/Off
- BLC / SDNR: On/Off
- White Balance: Auto/Manual
- Lens Type: Manual Iris / DC Auto Iris
- Lens Mount: CS
- 12 VDC / PoE



IGC2050F
Lens Not Included

Dome IP Camera / 2.0 Mega-pixel 3.0 ~ 9mm Varifocal Lens / True Day & Night (ICR) / DSS w/ IR (LED Distance 45 ft.) / 12 VDC / PoE

- 1/3" Progressive Scan CMOS Sensor
- 1100 TV Lines - 1920(H) x 1080(V)
- 1 Lux (DSS On)
- OSD / SDNR / DSS
- Electronic Shutter Speed: 1/60 ~ 1/600 (13 Step)
- S/N Ratio: More than 50dB
- AGC: On/Off
- BLC / SDNR: On/Off
- White Balance: Auto/Manual
- Lens Type: DC Auto Iris
- 3 Axis Mechanism / Service Video Out
- Lens Mount: S
- 12 VDC / PoE



IDC4050VR
Auto-Iris 3.0 ~ 9mm
Varifocal Lens Included

Vandal Dome IP Camera / 2.0 Mega-pixel 3.0 ~ 9mm Varifocal Lens / True Day & Night (ICR) / DSS w/ IR (LED Distance 45 ft.) / 12 VDC / PoE

- 1/3" Progressive Scan CMOS Sensor
- 1100 TV Lines - 1920(H) x 1080(V)
- 1 Lux (DSS On)
- OSD / SDNR / DSS
- Electronic Shutter Speed: 1/60 ~ 1/600 (13 Step)
- S/N Ratio: More than 50dB
- AGC: On/Off
- BLC / SDNR: On/Off
- White Balance: Auto/Manual
- Lens Type: DC Auto Iris
- 3 Axis Mechanism / Service Video Out
- Lens Mount: S
- 12 VDC / PoE



IVC5055VR
Auto-Iris 3.0 ~ 9mm
Varifocal Lens Included

IP Video Server - D1 (VGA)

H.264 1CH NETWORK VIDEO SERVER



IP11P
IP Video Server
1 Channel Video (H.264)
Full Duplex Two-Way Audio
SD Card and Local Memory
12 Volt DC / PoE

High Quality H.264 Compression Algorithm
 Full Duplex Two-Way Audio
 30ips @ Full D1 Resolution (720 x 480)
 De-Interlaced Video at 30ips
 Dynamic IP Support with Dynamic DNS

USB / SD Card Memory
 PoE / RS-422 for PTZ Control
 Watchdog for System Recovery (USB 2.0)
 1:N Multicasting and Relayed Data Transmission
 Various Client Applications



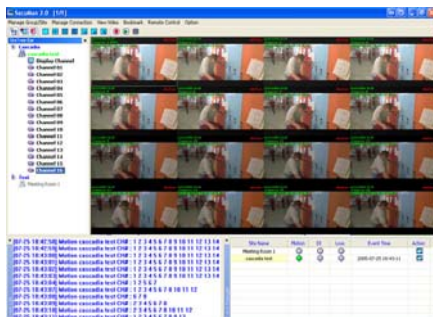
Hybrid IP / Super Hybrid Server Software



Player Software



Client Software



Multi-Client Software



Windows Mobile, Android & PDA Software



Web Client Software

HD-SDI 1.3 Mega-pixel Camera

HD-SDI Color Camera

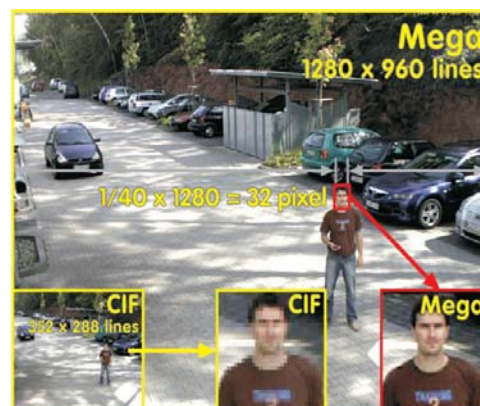
1.3 Mega-pixel - 1280 (H) x 1024 (V)
1/3" Panasonic Progressive Scan CMOS Sensor
800 TVL (Color / B&W)
True Day & Night (ICR) / 3D-SDNR
DSS / Audio / 12 VDC
Coaxial Cable Compatible (up to 330 ft.)

1/3" Panasonic Progressive Scan CMOS Sensor
 1.3 Mega-pixel - 1280(H) x 1024(V) / SMPTE 292M (1.485 Gb/s)
 800 TV Lines (Color / B&W)
 Lux Rating: 0.5 Lux (Color) / 0.1 Lux (B&W) / 0.05 Lux (B&W DSS On)
 Day/Night Mode: True Day & Night (ICR) Cut Filter
 Electronic Shutter Speed: 1/2 ~ 1/48,000 (21 Step)
 Digital Zoom: Off-20x (41 Step)
 S/N Ratio: More than 54dB
 On Screen Display (OSD)
 Digital Slow Shutter (DSS): On/Off
 AGC: Adjustable 0~15
 Flickerless: On/Off
 Super BLC: Off/Low/Middle/High
 SDNR: Adjustable 0~15
 3D-SDNR: On/Off
 White Balance: Auto (1,900K~12,000K)/Manual/Push
 Mirror: On/Off (Horizontal/Vertical)
 Privacy Mask: 8 Zones
 Camera Control: RS-485 / PELCO-D (2400~38,400bps)
 Lens Type: Manual Iris / DC Auto Iris
 Lens Mount: CS
 Power Requirements: 12 VDC
 Construction: Die Cast Aluminum Case / Black (Powder Coated)
 Dimensions: 71mm x 65mm x 143.9mm



HGP-2030F

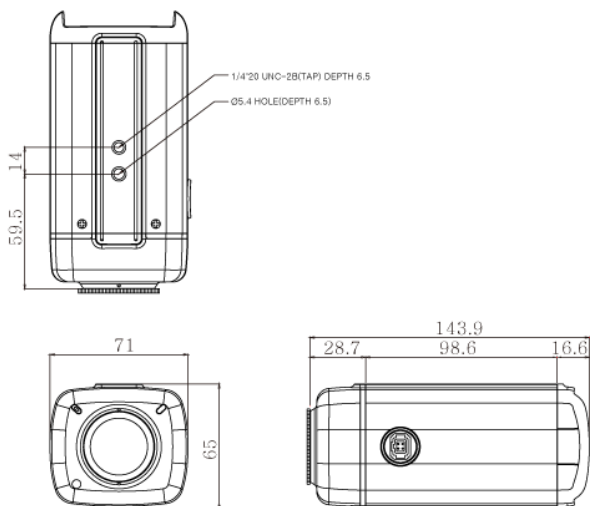
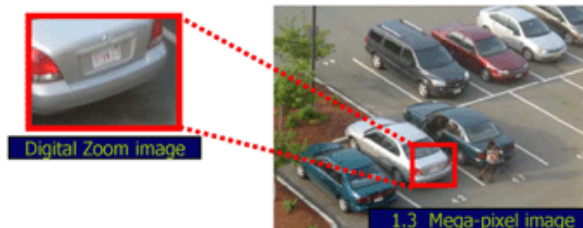
Lens Not Included



Built-In Microphone

High quality Mega pixels image

HGP2030F provides high definition image up to 1.3 Mega pixels via HD-SDI interface with conventional coaxial connection. Basically, it supports up to 1280x1024(aspect ratio 4:3) also cropped 720P 16:9 aspect ratio which is HDTV standards.



HD-SDI 2.1 Mega-pixel Camera

HD-SDI Color Camera

2.1 Mega-pixel - 1920 (H) x 1080 (V)

1/3" Panasonic Progressive Scan CMOS Sensor

1100 TVL (Color / B&W)

3D-DNR / DSS / Dual Voltage

Coaxial Cable Compatible (up to 330 ft.)



HDC21SD2

Lens Not Included

1/3" Panasonic Progressive Scan CMOS Sensor

2.1 Mega-pixel - 1920(H) x 1080(V) / SMPTE 292M (1.485 Gb/s)

1100 TV Lines (Color / B&W)

Lux Rating: 0.5 Lux (Color) / 0.1 Lux (B&W) / 0.05 Lux (B&W DSS On)

Day/Night Mode: Color by Day - B/W by Night (AGC Type)

Electronic Shutter Speed: 1/30 ~ 1/50,000 (9 Steps)

Digital Zoom: On/Off 2x ~ 64x (PIP)

S/N Ratio: More than 52dB

On Screen Display (OSD)

Digital Slow Shutter (DSS): On/Off x2 ~ x60 (9 Steps)

AGC: Off/Low/Middle/High

Flickerless: On/Off

BLC: Off/Low/Middle/High (1 Adjustable Target)

HBLC: Off/Low/Middle/High (4 Adjustable Targets)

ACCE: Off/Low/Middle/High

Defog: Off/Low/Middle/High

2D-DNR: On/Off Adjustable 0~15

3D-DNR: On/Off Adjustable 0~15

White Balance: Auto (1,900K~12,000K)/Manual/Push
Indoor/Outdoor

Mirror: On/Off (Horizontal/Vertical/Rotate)

Privacy Mask: 8 Zones

Camera Control: RS-485 / PELCO-D (2400~38,400bps)

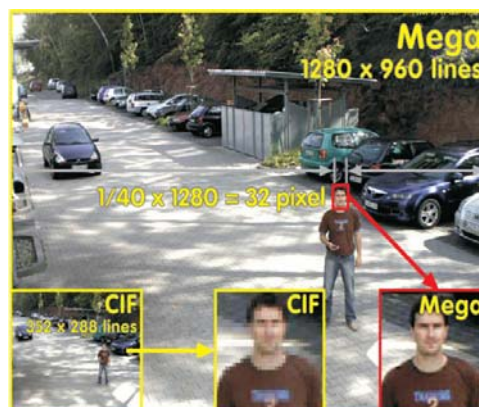
Lens Type: Manual Iris / DC Auto Iris / Video Iris

Lens Mount: C/CS

Power Requirements: 24 VAC / 12 VDC

Construction: Die Cast Aluminum Case / Black

Dimensions: 58mm x 52mm x 123mm



Digital Zoom & PIP

Up to x64 bi-cubic linear digital zoom and PIP using anti-aliasing down scaling.



ACCE(Adaptive Color & Contrast Enhancement)

HD-SDI Image Enhancer source of the software can be activated. HD-SDI Image Enhancer improves the clarity of images taken in poor conditions such as fog, smoke, rain or snow. Applied to live or recorded color video, it delivers real-time results and displays visual details that would otherwise have been difficult to see.



HD-SDI 2.1 Mega-pixel Camera

HD-SDI Color Camera

2.1 Mega-pixel - 1920 (H) x 1080 (V)

1/3" Panasonic Progressive Scan CMOS Sensor

1100 TVL (Color / B&W)

2.8 ~ 10mm Mega-pixel Varifocal Lens

True Day & Night (ICR) / 3D-DNR / DSS / Dual Voltage

Coaxial Cable Compatible (up to 330 ft.)



HDC21VTSDIR2

Auto Iris 2.8 ~ 10mm

Mega-pixel Varifocal
Lens Included

1/3" Panasonic Progressive Scan CMOS Sensor

2.1 Mega-pixel - 1920(H) x 1080(V) / SMPTE 292M (1.485 Gb/s)

1100 TV Lines (Color / B&W)

Lux Rating: 0.5 Lux (Color) / 0.1 Lux (B&W) / 0.05 Lux (B&W DSS On)

Day/Night Mode: True Day & Night (ICR) Cut Filter

Electronic Shutter Speed: 1/30 ~ 1/50,000 (9 Steps)

Digital Zoom: On/Off 2x ~ 64x (PIP)

S/N Ratio: More than 52dB

On Screen Display (OSD)

Digital Slow Shutter (DSS): On/Off x2 ~ x60 (9 Steps)

AGC: Off/Low/Middle/High

Flickerless: On/Off

BLC: Off/Low/Middle/High (1 Adjustable Target)

HBLC: Off/Low/Middle/High (4 Adjustable Targets)

ACCE: Off/Low/Middle/High

Defog: Off/Low/Middle/High

2D-DNR: On/Off Adjustable 0~15

3D-DNR: On/Off Adjustable 0~15

White Balance: Auto (1,900K~12,000K)/Manual/Push
Indoor/Outdoor

Mirror: On/Off (Horizontal/Vertical/Rotate)

Privacy Mask: 8 Zones

Camera Control: RS-485 / PELCO-D (2400~38,400bps)

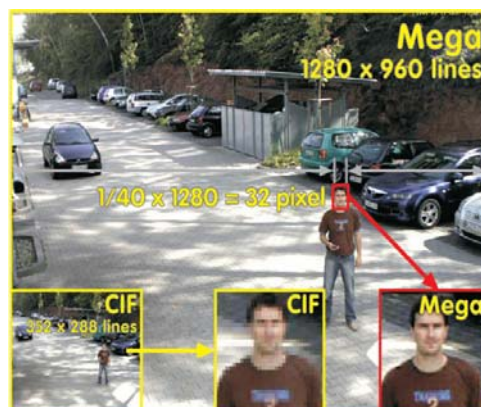
Lens Type: DC Auto Iris

Lens Mount: S

Power Requirements: 24 VAC / 12 VDC

Construction: Die Cast Aluminum Case / Black / Silver

Dimensions: 66mm x 63.5mm x 149mm



Digital Zoom & PIP

Up to x64 bi-cubic linear digital zoom and PIP using anti-aliasing down scaling.



DZOOM(x4) & PIP(1/9) © 1920(H)x1080(V)

ACCE(Adaptive Color & Contrast Enhancement)

HD-SDI Image Enhancer source of the software can be activated. HD-SDI Image Enhancer improves the clarity of images taken in poor conditions such as fog, smoke, rain or snow. Applied to live or recorded color video, it delivers real-time results and displays visual details that would otherwise have been difficult to see.



HD-SDI 2.1 Mega-pixel Camera

HD-SDI Vandal Dome Camera

2.1 Mega-pixel - 1920 (H) x 1080 (V)

1/3" Panasonic Progressive Scan CMOS Sensor

1100 TVL (Color / B&W)

2.8 ~ 10mm Mega-pixel Varifocal Lens

True Day & Night (ICR) / 3D-DNR / DSS / Dual Voltage

Coaxial Cable Compatible (up to 330 ft.)

1/3" Panasonic Progressive Scan CMOS Sensor

2.1 Mega-pixel - 1920(H) x 1080(V) / SMPTE 292M (1.485 Gb/s)

1100 TV Lines (Color / B&W)

Lux Rating: 0.5 Lux (Color) / 0.1 Lux (B&W) / 0.05 Lux (B&W DSS On)

Day/Night Mode: True Day & Night (ICR) Cut Filter

Electronic Shutter Speed: 1/30 ~ 1/50,000 (9 Steps)

Digital Zoom: On/Off 2x ~ 64x (PIP)

S/N Ratio: More than 52dB

On Screen Display (OSD)

Digital Slow Shutter (DSS): On/Off x2 ~ x60 (9 Steps)

AGC: Off/Low/Middle/High

Flickerless: On/Off

BLC: Off/Low/Middle/High (1 Adjustable Target)

HBLC: Off/Low/Middle/High (4 Adjustable Targets)

ACCE: Off/Low/Middle/High

Defog: Off/Low/Middle/High

2D-DNR: On/Off Adjustable 0~15

3D-DNR: On/Off Adjustable 0~15

White Balance: Auto (1,900K~12,000K)/Manual/Push
Indoor/Outdoor

Mirror: On/Off (Horizontal/Vertical/Rotate)

Privacy Mask: 8 Zones

Camera Control: RS-485 / PELCO-D (2400~38,400bps)

Lens Type: DC Auto Iris

Lens Mount: S

Power Requirements: 24 VAC / 12 VDC

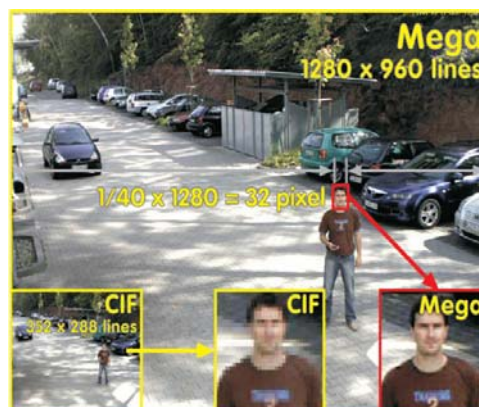
Construction: Die Cast Aluminum Case / Charcoal (Powder Coated)

Dimensions: 150mm x 100mm x 150mm



HDV21VTSDIR2

Auto Iris 2.8 ~ 10mm
Mega-pixel Varifocal
Lens Included



Digital Zoom & PIP

Up to x64 bi-cubic linear digital zoom and PIP using anti-aliasing down scaling.



DZOOM(x4) & PIP(1/9) © 1920(H)x1080(V)

ACCE(Adaptive Color & Contrast Enhancement)

HD-SDI Image Enhancer source of the software can be activated. HD-SDI Image Enhancer improves the clarity of images taken in poor conditions such as fog, smoke, rain or snow. Applied to live or recorded color video, it delivers real-time results and displays visual details that would otherwise have been difficult to see.



HD-SDI 2.1 Mega-pixel Camera

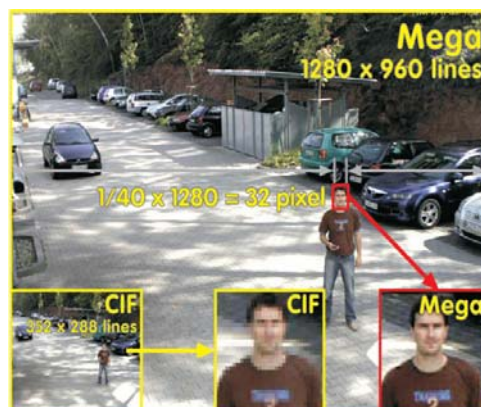
HD-SDI Weatherproof Bullet Camera
2.1 Mega-pixel - 1920 (H) x 1080 (V)
1/3" Panasonic Progressive Scan CMOS Sensor
1100 TVL (Color / B&W)
2.8 ~ 10mm Mega-pixel Varifocal Lens
True Day & Night (ICR) / 3D-DNR / DSS / Dual Voltage
Coaxial Cable Compatible (up to 330 ft.)

1/3" Panasonic Progressive Scan CMOS Sensor
 2.1 Mega-pixel - 1920(H) x 1080(V) / SMPTE 292M (1.485 Gb/s)
 1100 TV Lines (Color / B&W)
 Lux Rating: 0.5 Lux (Color) / 0.1 Lux (B&W) / 0.05 Lux (B&W DSS On)
 Day/Night Mode: True Day & Night (ICR) Cut Filter
 Electronic Shutter Speed: 1/30 ~ 1/50,000 (9 Steps)
 Digital Zoom: On/Off 2x ~ 64x (PIP)
 S/N Ratio: More than 52dB
 On Screen Display (OSD)
 Digital Slow Shutter (DSS): On/Off x2 ~ x60 (9 Steps)
 AGC: Off/Low/Middle/High
 Flickerless: On/Off
 BLC: Off/Low/Middle/High (1 Adjustable Target)
 HBL: Off/Low/Middle/High (4 Adjustable Targets)
 ACCE: Off/Low/Middle/High
 Defog: Off/Low/Middle/High
 2D-DNR: On/Off Adjustable 0~15
 3D-DNR: On/Off Adjustable 0~15
 White Balance: Auto (1,900K~12,000K)/Manual/Push
 Indoor/Outdoor
 Mirror: On/Off (Horizontal/Vertical/Rotate)
 Privacy Mask: 8 Zones
 Camera Control: RS-485 / PELCO-D (2400~38,400bps)
 Lens Type: DC Auto Iris
 Lens Mount: S
 Power Requirements: 24 VAC / 12 VDC
 Construction: Die Cast Aluminum Case / Charcoal (Powder Coated)
 Dimensions: 100mm x 125mm x 230mm
 Weatherproof – IP 66



HDB21VTSDIR2

Auto Iris 2.8 ~ 10mm
 Mega-pixel Varifocal
 Lens Included



Digital Zoom & PIP

Up to x64 bi-cubic linear digital zoom and PIP using anti-aliasing down scaling.



ACCE(Adaptive Color & Contrast Enhancement)

HD-SDI Image Enhancer source of the software can be activated. HD-SDI Image Enhancer improves the clarity of images taken in poor conditions such as fog, smoke, rain or snow. Applied to live or recorded color video, it delivers real-time results and displays visual details that would otherwise have been difficult to see.



Camera Enclosures and Mounts



883-06W
6" Indoor Mount



CH801HBM
Enclosure and Mount
w/ Heater and Blower



862W
Indoor Wall
Mount Plate



WDB202
Indoor and Vandal
Dome
Wall Mount
Polycarbonate
(DBB, VCM, IDx4 Domes)



WDB204
Indoor Dome
Wall Mount
Polycarbonate
(LBM, DBM Domes)



WDB100
Vandal Dome
Wall Mount
Aluminum
(LDM, VCM Domes)



CVB110
Vandal Dome
Ceiling Mount
Aluminum
(LDM, VCM Domes)



SPB1000
Indoor PTZ
Pendant Mount
Aluminum



SWB1000
Indoor PTZ
Wall Mount
Aluminum



SIB1000
Indoor PTZ
In-Ceiling Mount
Aluminum



SCB2000
Indoor/Outdoor
PTZ Corner Mount
Aluminum



SOB2000
Indoor/Outdoor
PTZ Pole Mount
Aluminum

Camera Lenses

TAMRON



Varifocal Manual Iris

Model Number	Description	Iris	Mount
13VM2812ASII	2.8 ~ 12mm (F 1.4) - Aspherical	Manual	CS
13VM308AS	3.0 ~ 8mm (F 1.0) - Aspherical	Manual	CS
13VM550ASII	5.0 ~ 50mm (F 1.4) - Aspherical	Manual	CS



Varifocal Auto Iris

Model Number	Description	Iris	Mount
13VG2812ASII	2.8 ~ 12mm (F 1.4) - Aspherical	DC Auto	CS
13VG308AS	3.0 ~ 8mm (F 1.0) - Aspherical	DC Auto	CS
13VG550ASII	5.0 ~ 50mm (F 1.4) - Aspherical	DC Auto	CS



IR Corrective Varifocal Auto Iris

Model Number	Description	Iris	Mount
13VG308ASIRII	3.0 ~ 8mm (F 1.0) - Aspherical	DC Auto	CS
13VG1040ASIR	10.0 ~ 40mm (F 1.4) - Aspherical	DC Auto	CS



Megapixel Auto Iris

Model Number	Description	Iris	Mount
M13VG246	2.4 ~ 6mm (F 1.2) - Aspherical	DC Auto	CS
M13VG308	3.0 ~ 8mm (F 1.0) - Aspherical	DC Auto	CS
M13VG412	4.0 ~ 12mm (F 1.4) - Aspherical	DC Auto	CS
M13VG550	4.0 ~ 12mm (F 1.4) - Aspherical	DC Auto	CS



CCTV Power Supplies

12 Volt DC Indoor

- P3DCSEL-4-3:** 4 Outputs / 12 or 24 VDC / 3Amps
P3DC15-4-3LT: 4 Outputs / 6 ~ 15 VDC / 2.5Amps / UL Listed
P3DCSEL-8-5: 8 Outputs / 12 or 24 VDC / 5Amps
P3DC15-8-4L: 8 Outputs / 6 ~ 15 VDC / 4Amps / UL Listed
P3DCSEL-16-5: 16 Outputs / 12 or 24 VDC / 5Amps



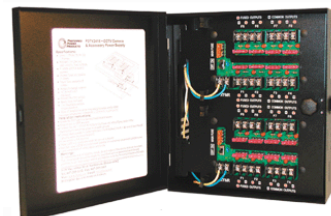
24 Volt AC Indoor

- P3AC24-4-4L:** 4 Outputs / 24 VAC / 4Amps / UL Listed
P3AC24-8-4L: 8 Outputs / 24 VAC / 4Amps / UL Listed
P3AC24-16-8L: 16 Outputs / 24 VAC / 8Amps / UL Listed



24 Volt AC Indoor (High Power)

- P3AC24-4-7:** 4 Outputs / 24 VAC / 7.25Amps
P3AC24-4-12: 4 Outputs / 24 VAC / 12.5Amps
P3AC24-8-7: 8 Outputs / 24 VAC / 7.25Amps
P3AC24-8-12: 8 Outputs / 24 VAC / 12.5Amps
P3AC24-8-25: 8 Outputs / 24 VAC / 25Amps
P3AC24-16-14: 16 Outputs / 24 VAC / 14.5Amps
P3AC24-16-25: 16 Outputs / 24 VAC / 25Amps



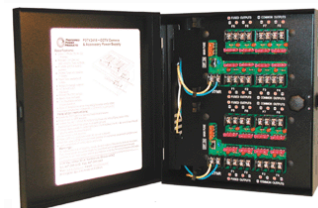
Rack Mount Indoor

- PMAX-AC-16:** 16 Outputs / 24 VAC / 8Amps / UL Listed
PMAX-AC-32: 32 Outputs / 24 VAC / 16Amps / UL Listed
PMAX-DC-16: 16 Outputs / 12 VDC / 16Amps
PMAX-DC-32: 32 Outputs / 12 VDC / 16Amps



Dual Voltage Indoor (12 VDC & 24 VAC)

- P3DCAC-8-3:** 16 Outputs - 8 Outputs / 12 VDC / 3Amps
 - 8 Outputs / 24 VAC / 4Amps
P3DCAC-8-5: 16 Outputs - 8 Outputs / 12 VDC / 5Amps
 - 8 Outputs / 24 VAC / 4Amps



24 Volt AC Outdoor (NEMA-4X)

- P3AC24-1-3WL:** 1 Output / 24 VAC / NEMA-4X Enclosure / 3Amps / UL Listed
P3AC24-1-4W: 1 Output / 24 VAC / NEMA-4X Enclosure / 4Amps
P3AC24-4-7W: 4 Outputs / 24 VAC / NEMA-4X Enclosure / 7.25Amps
P3AC24-4-12W: 4 Outputs / 24 VAC / NEMA-4X Enclosure / 12.5Amps
P3AC24-8-7W: 8 Outputs / 24 VAC / NEMA-4X Enclosure / 7.25Amps



Cascadia™

Creating Remote Possibilities®

16 or 32
Analog Channels
(over Coaxial Cable)



4 HD-SDI Channels
(over Coaxial Cable)



Network IP Channels
(over the LAN or WAN)



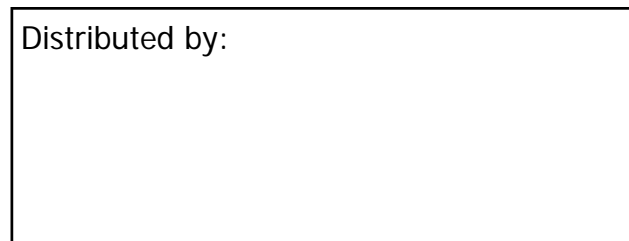
Super Hybrid
Analog Capture Card
+
HD-SDI Capture Card
+
IP Camera Software



Super Hybrid = Analog + HD-SDI + IP



Distributed by:



(888) 421-0050 / www.cascadiadvrt.com